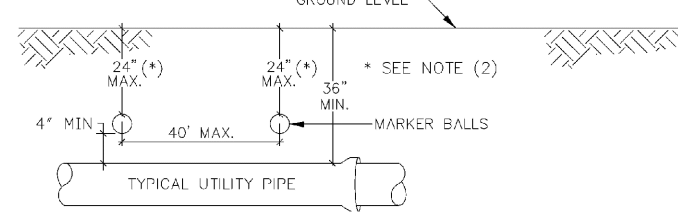


NOTES:  
WHEN CONDITIONS PERMIT, PIPE DEFLECTION MAY BE USED INSTEAD OF BRIDS TO OBTAIN THE MINIMUM CLEARANCE. FACTORY OFFSETS MAY BE USED.

TYPICAL CONFLICT DETAIL

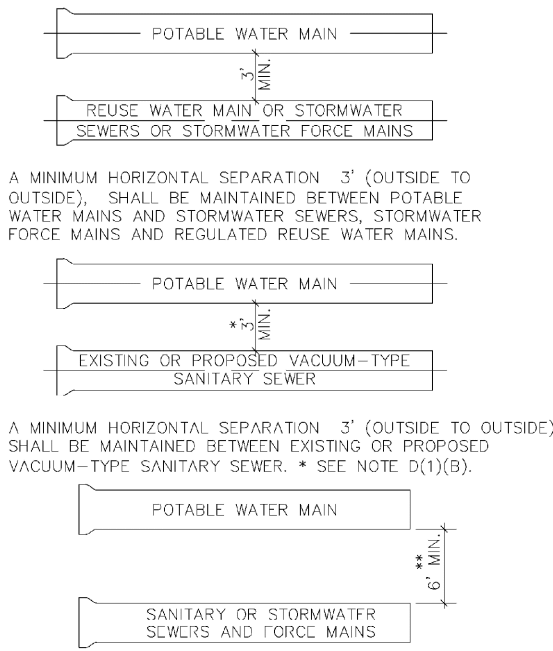
ENGINEERING STANDARDS 2022			
REVISIONS	BY	DATE	DESCRIPTION
1	BY	DATE	ENGINEERING DIVISION
2	BY	DATE	CITY OF POMPAÑO BEACH
3	BY	DATE	SCALE: N.T.S.
4	BY	DATE	DATE: JUNE 2022
5	BY	DATE	DWG. NO. 206-1



GENERAL NOTES:  
1. ALL UTILITY PIPE SHALL BE INSTALLED WITH 4" MARKER BALLS PLACED EVERY 40' AND A 4" LUMPY FITTING FOR IDENTIFICATION AND MARKING PURPOSES. BUILT UP 200# 1/2" PIPE AT A MINIMUM DUE TO 24 INCHES OR AS APPROVED BY THE OWNER. IT SHALL BE COLOR CODED AND MARKED AS FOLLOWS:  
SEWER SYSTEM  
A. COLOR: GREEN  
B. FITTINGS: SANITARY SEWER  
C. FREQUENCY OF MARKER BALLS SHALL BE 121.6 KHZ  
D. THE MARKER BALLS CAN BE BORED IN ANY ORIENTATION  
E. THE MARKER BALLS SHALL BE IDENTIFIED BY STANDARD METAL IDENTIFICATION EQUIPMENT AND SHALL BE MANUFACTURED BY TEMPO OR 3M LOGATOR SYSTEM OR EQUIVALENT (FREQUENCY 121.6 KHZ)  
2. FOR LARGE DIAMETER PIPE INSTALLED AT DEPTHS BELOW 4'-0" MARKER BALLS SHALL BE PLACED AT A MINIMUM DEPTH OF 4'-0" BELOW GRADE.

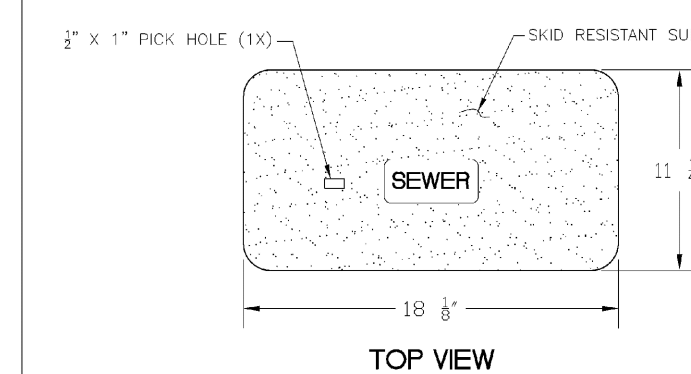
SEWER PIPE IDENTIFICATION

ENGINEERING STANDARDS 2022			
REVISIONS	BY	DATE	DESCRIPTION
1	BY	DATE	ENGINEERING DIVISION
2	BY	DATE	CITY OF POMPAÑO BEACH
3	BY	DATE	SCALE: N.T.S.
4	BY	DATE	DATE: JUNE 2022
5	BY	DATE	DWG. NO. 207-1



MINIMUM HORIZONTAL SEPARATION REQUIREMENTS FOR POTABLE WATER, REUSE, STORMWATER AND SEWER LINES

ENGINEERING STANDARDS 2022			
REVISIONS	BY	DATE	DESCRIPTION
1	BY	DATE	ENGINEERING DIVISION
2	BY	DATE	CITY OF POMPAÑO BEACH
3	BY	DATE	SCALE: N.T.S.
4	BY	DATE	DATE: JUNE 2022
5	BY	DATE	DWG. NO. 209-1

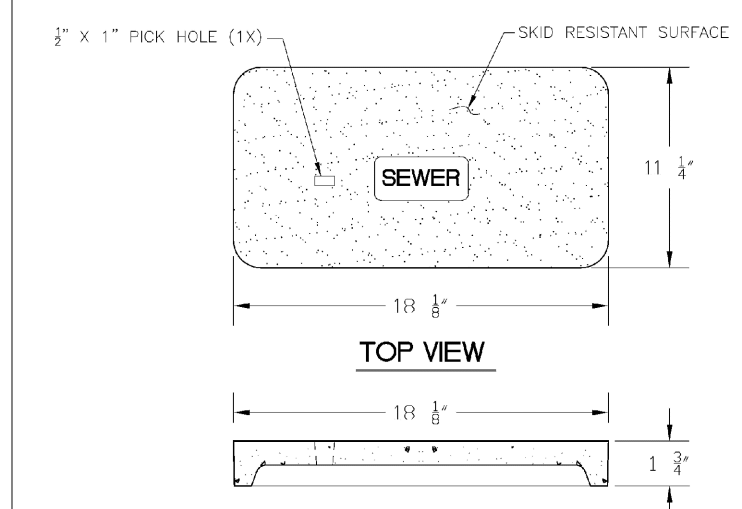


NOTE:  
1. MATERIAL: FIBERGLASS REINFORCED POLYMER CONCRETE & FIBERGLASS REINFORCED POLYMER  
2. CO. OR. GREEN  
3. LOAD RATING: AS (ASTM C857)  
4. LOAD: SEWER

SEWER BOX AND COVER

PRODUCT RATING - NON TRAFFIC			
LOAD DESIGNATION	DESCRIPTION	DESIGN LOADS	TESTING
AASHTO H10	LIGHT TRUCK TRAFFIC	8,000	22,568 (4)
		10,400	282

ENGINEERING STANDARDS 2022			
REVISIONS	BY	DATE	DESCRIPTION
1	BY	DATE	ENGINEERING DIVISION
2	BY	DATE	CITY OF POMPAÑO BEACH
3	BY	DATE	SCALE: N.T.S.
4	BY	DATE	DATE: JUNE 2022
5	BY	DATE	DWG. NO. 210-1

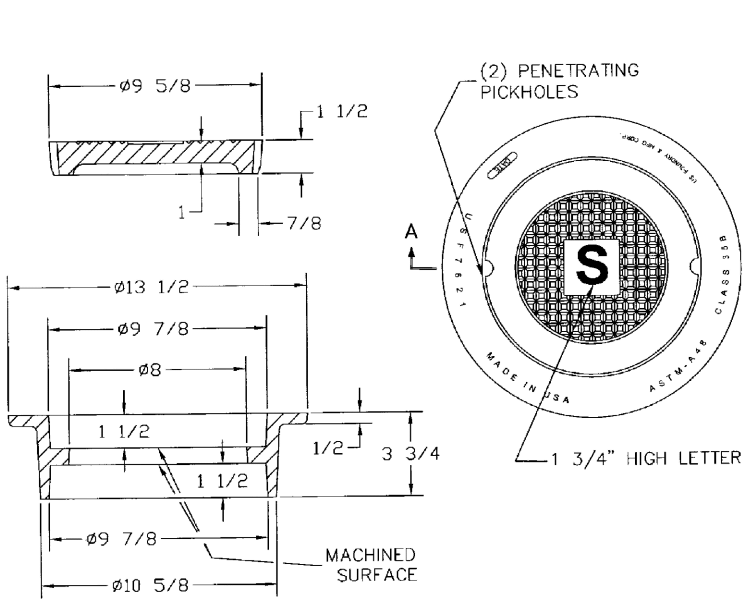


NOTE:  
1. MATERIAL: FIBERGLASS REINFORCED POLYMER CONCRETE & FIBERGLASS REINFORCED POLYMER  
2. CO. OR. GREEN  
3. LOAD RATING: AS (ASTM C857)  
4. LOAD: SEWER

SEWER BOX AND COVER

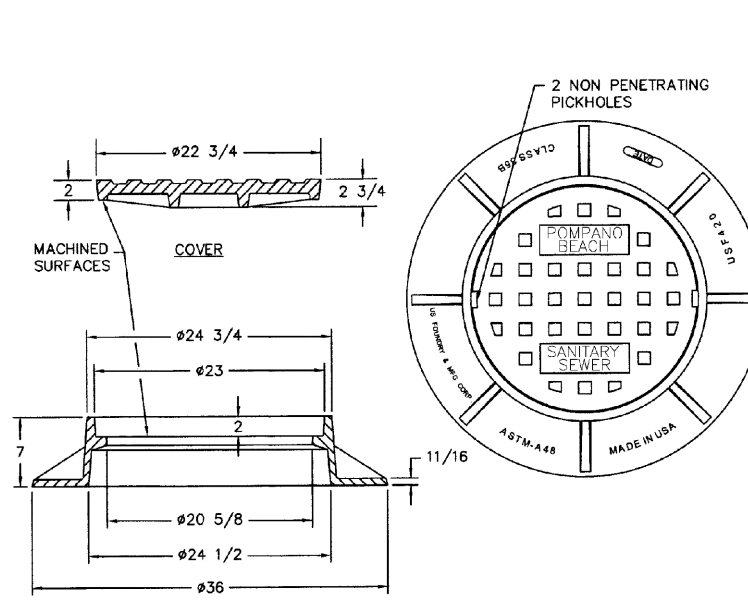
PRODUCT RATING - TRAFFIC			
LOAD DESIGNATION	DESCRIPTION	DESIGN LOADS	TESTING
AASHTO H15	MEDIUM TRUCK TRAFFIC	12,000	27,000 (5)
		15,600	225

ENGINEERING STANDARDS 2022			
REVISIONS	BY	DATE	DESCRIPTION
1	BY	DATE	ENGINEERING DIVISION
2	BY	DATE	CITY OF POMPAÑO BEACH
3	BY	DATE	SCALE: N.T.S.
4	BY	DATE	DATE: JUNE 2022
5	BY	DATE	DWG. NO. 210-2



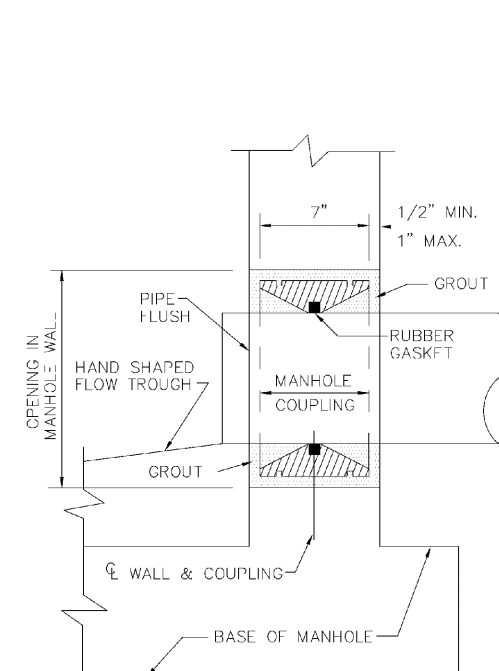
SEWER BOX AND COVER - HEAVY TRAFFIC

ENGINEERING STANDARDS 2022			
REVISIONS	BY	DATE	DESCRIPTION
1	BY	DATE	ENGINEERING DIVISION
2	BY	DATE	CITY OF POMPAÑO BEACH
3	BY	DATE	SCALE: N.T.S.
4	BY	DATE	DATE: JUNE 2022
5	BY	DATE	DWG. NO. 210-3



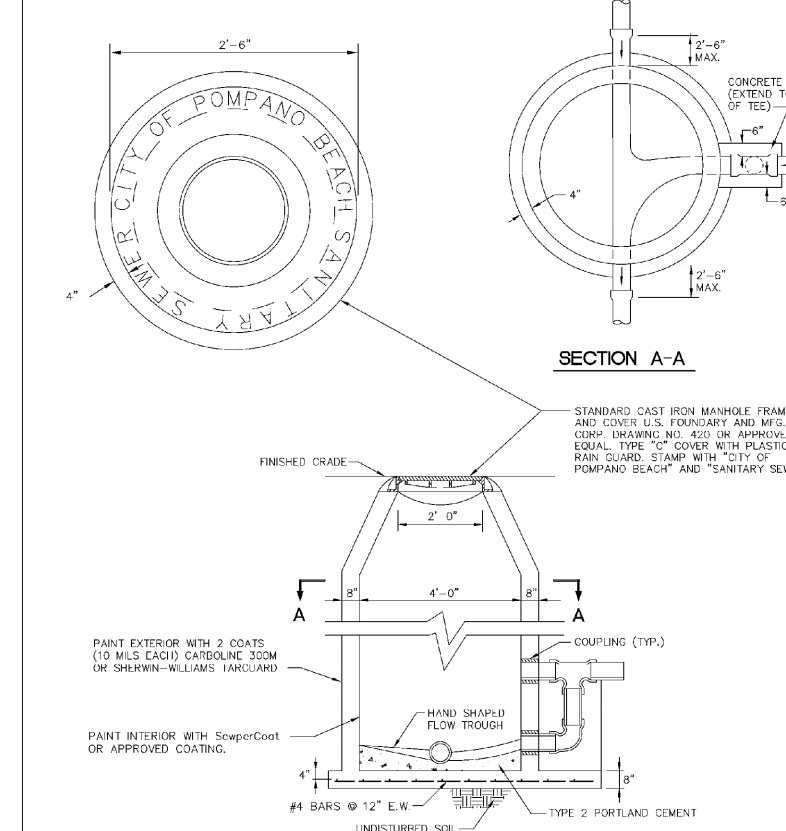
TRAFFIC RATED FRAME & COVER

ENGINEERING STANDARDS 2022			
REVISIONS	BY	DATE	DESCRIPTION
1	BY	DATE	ENGINEERING DIVISION
2	BY	DATE	CITY OF POMPAÑO BEACH
3	BY	DATE	SCALE: N.T.S.
4	BY	DATE	DATE: JUNE 2022
5	BY	DATE	DWG. NO. 211-1



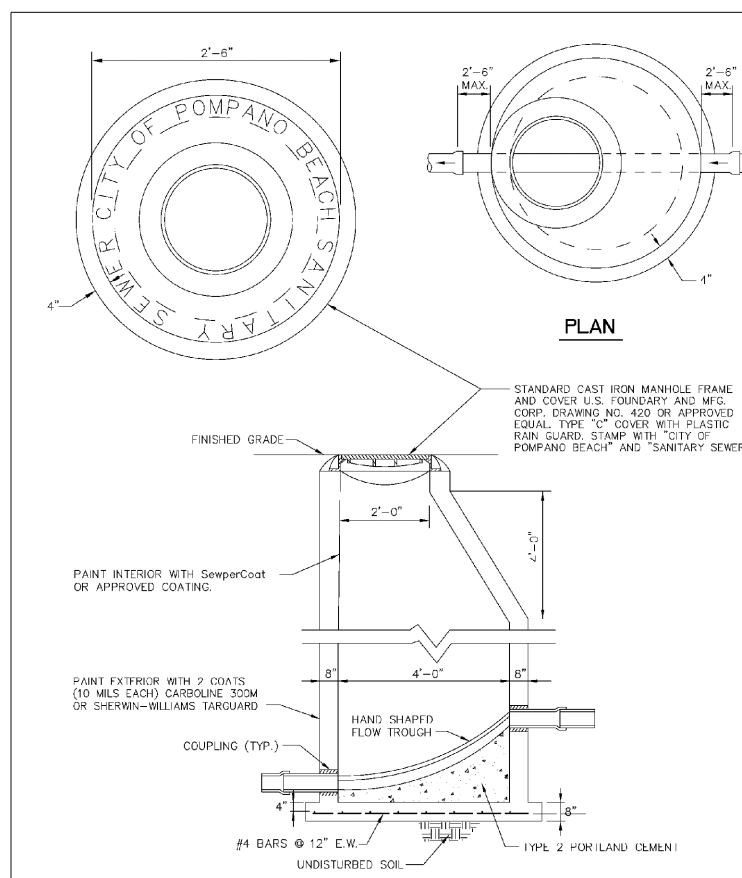
MANHOLE COUPLING

ENGINEERING STANDARDS 2022			
REVISIONS	BY	DATE	DESCRIPTION
1	BY	DATE	ENGINEERING DIVISION
2	BY	DATE	CITY OF POMPAÑO BEACH
3	BY	DATE	SCALE: N.T.S.
4	BY	DATE	DATE: JUNE 2022
5	BY	DATE	DWG. NO. 212-1



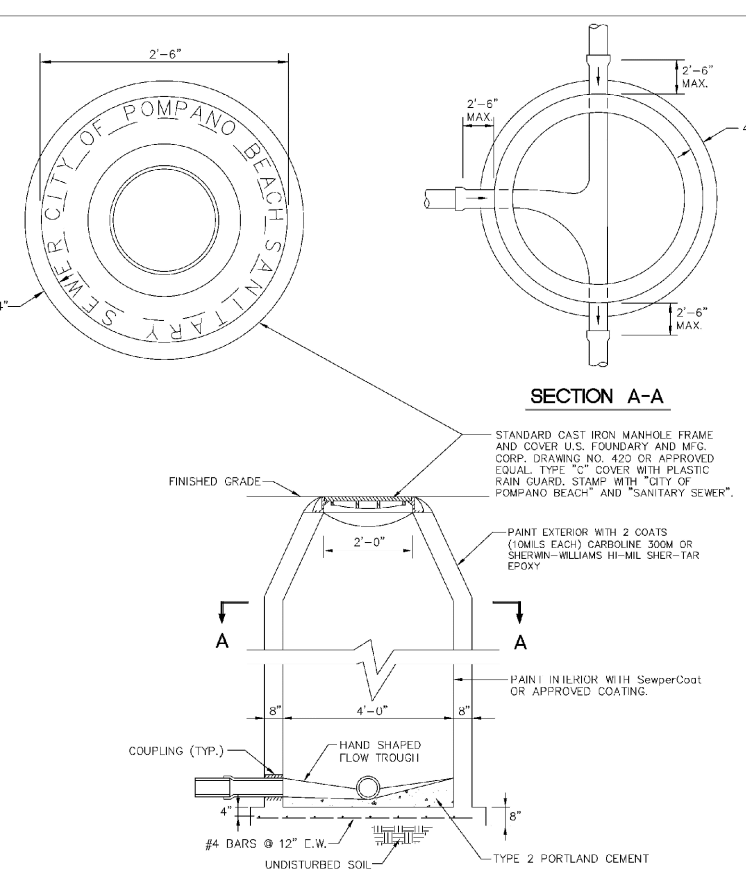
TYPE 'A' DROP MANHOLE

ENGINEERING STANDARDS 2022			
REVISIONS	BY	DATE	DESCRIPTION
1	BY	DATE	ENGINEERING DIVISION
2	BY	DATE	CITY OF POMPAÑO BEACH
3	BY	DATE	SCALE: N.T.S.
4	BY	DATE	DATE: JUNE 2022
5	BY	DATE	DWG. NO. 213-1



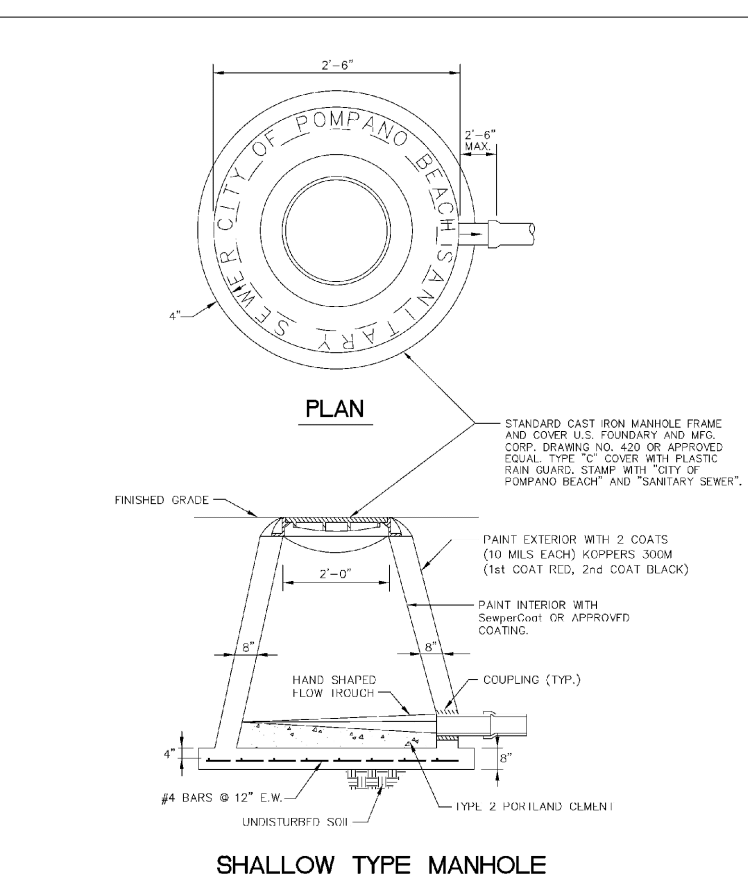
TYPE 'B' DROP MANHOLE

ENGINEERING STANDARDS 2022			
REVISIONS	BY	DATE	DESCRIPTION
1	BY	DATE	ENGINEERING DIVISION
2	BY	DATE	CITY OF POMPAÑO BEACH
3	BY	DATE	SCALE: N.T.S.
4	BY	DATE	DATE: JUNE 2022
5	BY	DATE	DWG. NO. 214-1



STANDARD MANHOLE

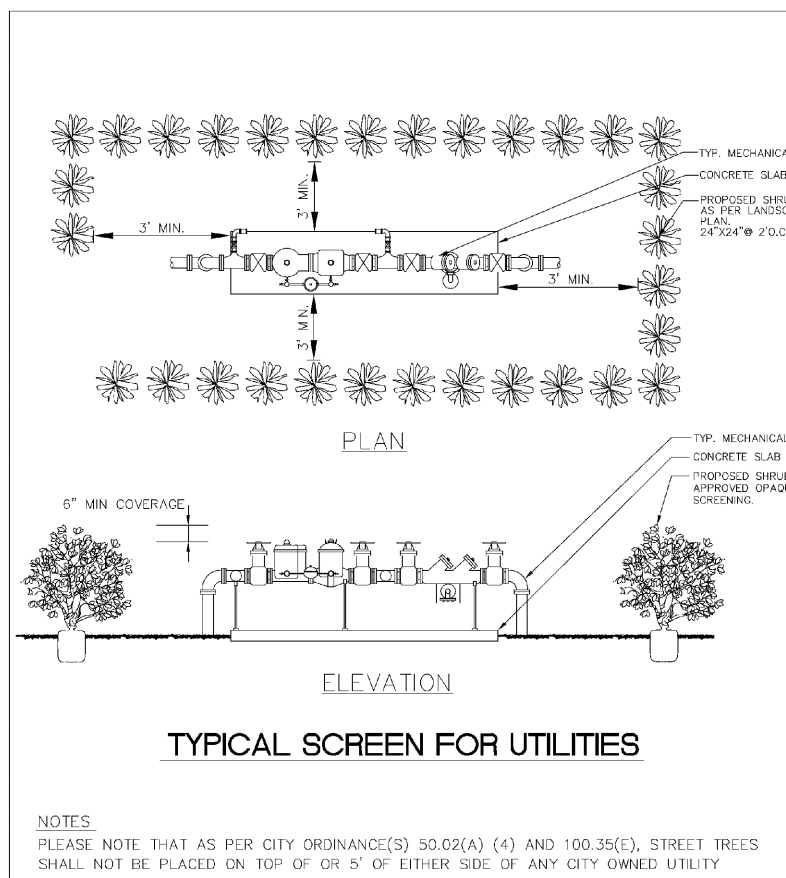
ENGINEERING STANDARDS 2022			
REVISIONS	BY	DATE	DESCRIPTION
1	BY	DATE	ENGINEERING DIVISION
2	BY	DATE	CITY OF POMPAÑO BEACH
3	BY	DATE	SCALE: N.T.S.
4	BY	DATE	DATE: JUNE 2022
5	BY	DATE	DWG. NO. 215-1



SHALLOW TYPE MANHOLE

ENGINEERING STANDARDS 2022			
REVISIONS	BY	DATE	DESCRIPTION
1	BY	DATE	ENGINEERING DIVISION
2	BY	DATE	CITY OF POMPAÑO BEACH
3	BY	DATE	SCALE: N.T.S.
4	BY	DATE	DATE: JUNE 2022
5	BY	DATE	DWG. NO. 216-1

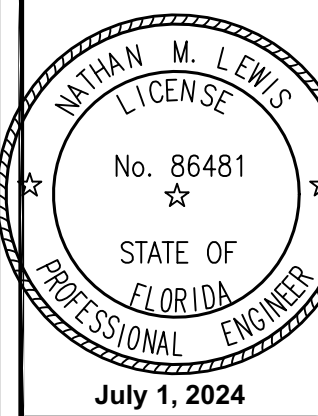
Digitally signed by Stephen Botek  
Date: 2024.07.01 17:13:53 -04'00'



TYPICAL SCREEN FOR UTILITIES

ENGINEERING STANDARDS 2022			
REVISIONS	BY	DATE	DESCRIPTION
1	BY	DATE	ENGINEERING DIVISION
2	BY	DATE	CITY OF POMPAÑO BEACH
3	BY	DATE	SCALE: N.T.S.
4	BY	DATE	DATE: JUNE 2022
5	BY	DATE	DWG. NO. 315-1

BTE REF DATE: 00.00.00			
REVISIONS	DATE	#	



THIS DOCUMENT HAS BEEN DIGITALLY SIGNED AND SEALED BY NATHAN M. LEWIS, P.E. ON THE DATE ADJACENT TO THE SEAL.  
PRINTED COPIES OF THIS DOCUMENT ARE NOT CONSIDERED SIGNED AND SEALED AND THE SIGNATURE MUST BE VERIFIED ON ANY ELECTRONIC COPIES.

Celebrating 15 Years

WATER AND SANITARY SEWER DETAILS  
580 BRINY  
580 Briny Ave  
Pompano Beach, FL 33062

Botek Thurlow Engineering, Inc.  
3400 NW 9th Avenue, Suite 102, Ft. Lauderdale, FL 33309  
www.botekthurlow-eng.com p: 954-568-8888 f: 954-568-0757

BTE PROJECT #: 22-0804

PROJECT DATE: 10-23-22

SHEET #: C-2.3